

OWNED &  
MANAGED BY

**GROWTHPOINT**  
PROPERTIES



**LAKESIDE**  
**MALL**

**LEASING GUIDE**



01

# GROWTHPOINT OVERVIEW



## 01 GROWTHPOINT OVERVIEW

# MANAGER & OWNER OF MALL

Our extensive and diverse portfolio of retail assets consists of quality, well-supported malls in major metropolitan areas that have a high renewal success rate.

From community shopping centres and lifestyle retail parks to large regional malls, they are a positive force for the local economy and society through their charity and community work, building strong connections with our shoppers.

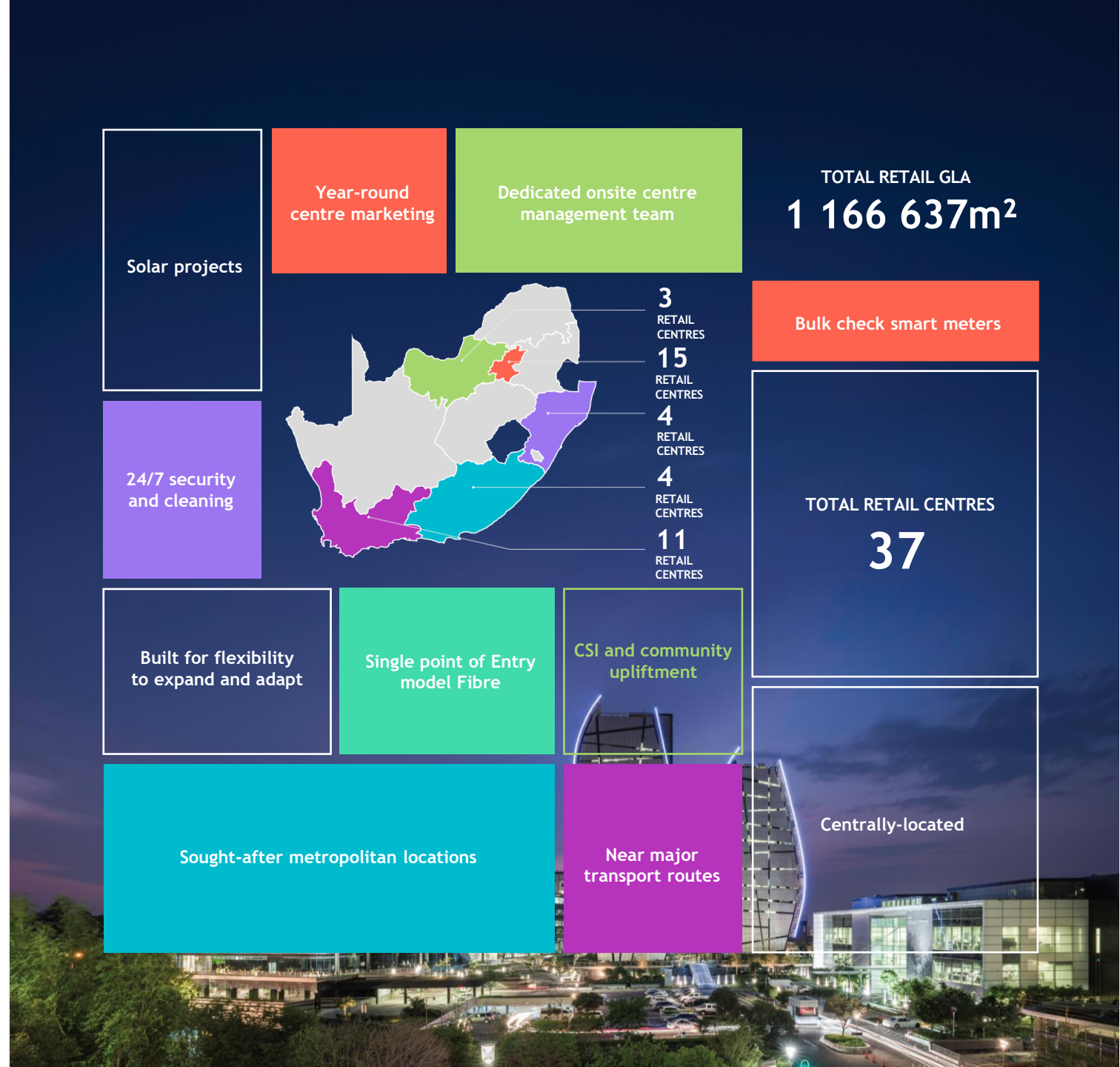


# RETAIL PORTFOLIO OVERVIEW

Our retail properties give us access to valuable property data and retail statistics.

The data offers key insight into consumer behaviour patterns and allows us to offer an optimal mix of retailers that best serve the surrounding communities.

In addition, our shopping centres regularly undergo refurbishments and extensions, ensuring that they remain relevant and appealing to our shoppers.



02

# MALL PROFILE



## LAKESIDE MALL

Lakeside Mall is a 65 000m<sup>2</sup> regional shopping centre which rests on the southern banks of the Civic Lake in Benoni. Vibrant and lively, the mall attracts shoppers from all walks of life with its convenient shopping, superb range of merchandise and competitive prices.

A quality regional shopping centre; Lakeside Mall is well-loved for its strong roots in the community and its celebration of all things South African. With over 130 stores and restaurants, Lakeside Mall offers the community convenience, product variety and great value.



## OFFERING

Lakeside Mall is conveniently located just off the N12 highway, with easy access from the neighbouring areas of Brakpan, Springs, Nigel, Boksburg, Benoni and Kempton Park.

The centre is a 10 minute walk from the Benoni train station, and is across the road from the major taxi rank known as the Lakeside taxi rank;



Small Regional Mall



TOTAL RETAIL GLA:

**65 340m<sup>2</sup>**



ANCHOR/MAJOR TENANTS:

Game  
Shoprite  
Woolworths  
Edgars  
Pick n Pay  
Dis-Chem



CATCHMENT AREA:

Boksburg  
Daveyton  
Wattville  
Tsakane  
Rynfield  
Farrarmere  
Lakefield



**39** Fashion outlets

**132** Retail stores & eateries



**12** Eateries



**10** ATMs

**9** Branches



**79** National retailers



**2677**

**FREE**  
Parking Bays

# SHOPPER PROFILE



AVERAGE  
Shopper Age  
**35 - 40**

**64%** **36%**  
Female Male

FOOT AVERAGE  
ANNUAL TRAFFIC  
**8.51 million**  
Shoppers

FOLLOWERS  
Facebook  
**25 511**

FOLLOWERS  
Instagram  
**3 867**

LSM (LIVING STANDARD MEASURE) **5 - 10**

LANGUAGES MOST SPOKEN

English IsiZulu  
Setswana

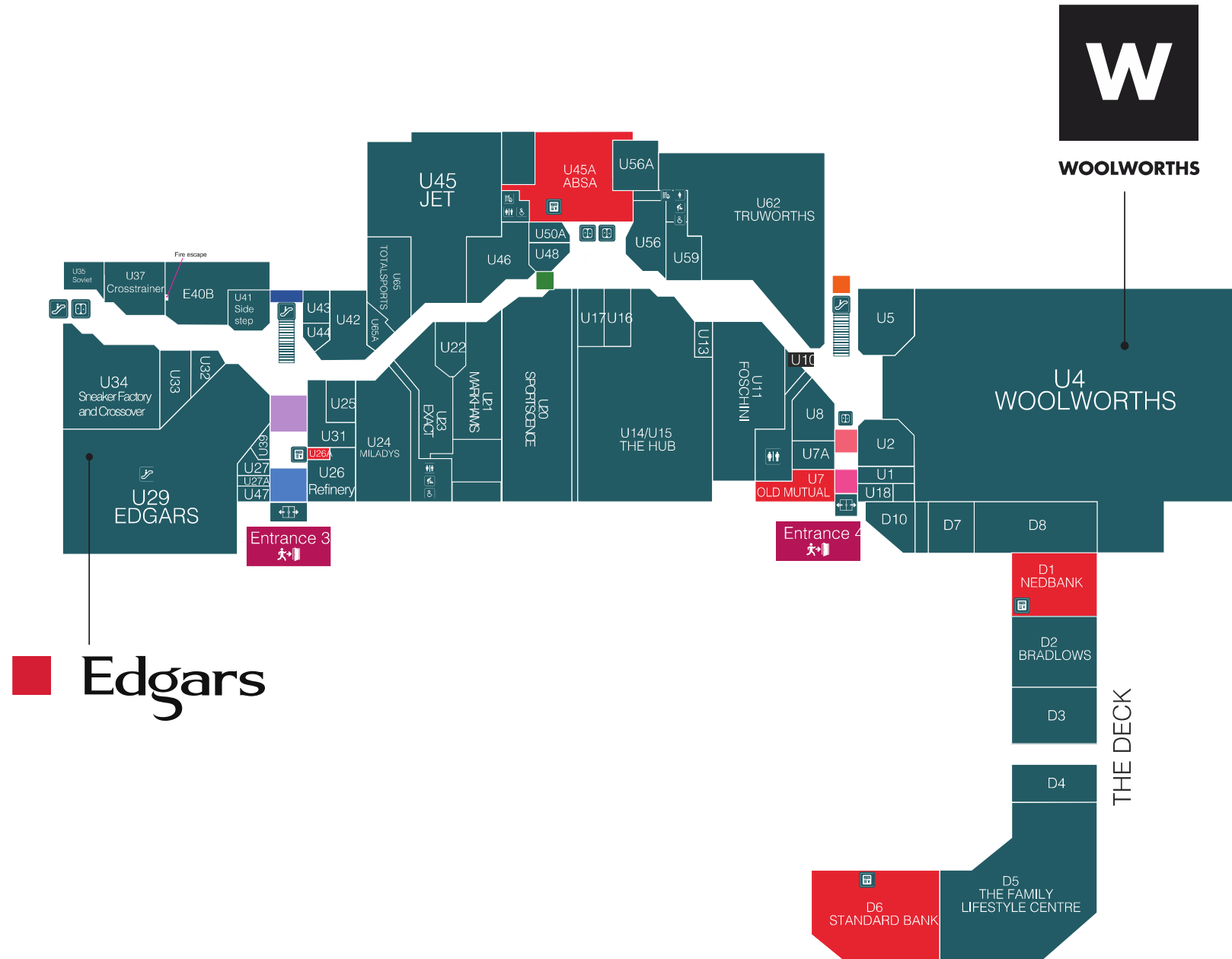
03

# FLOOR PLANS



# 03 FLOOR PLANS

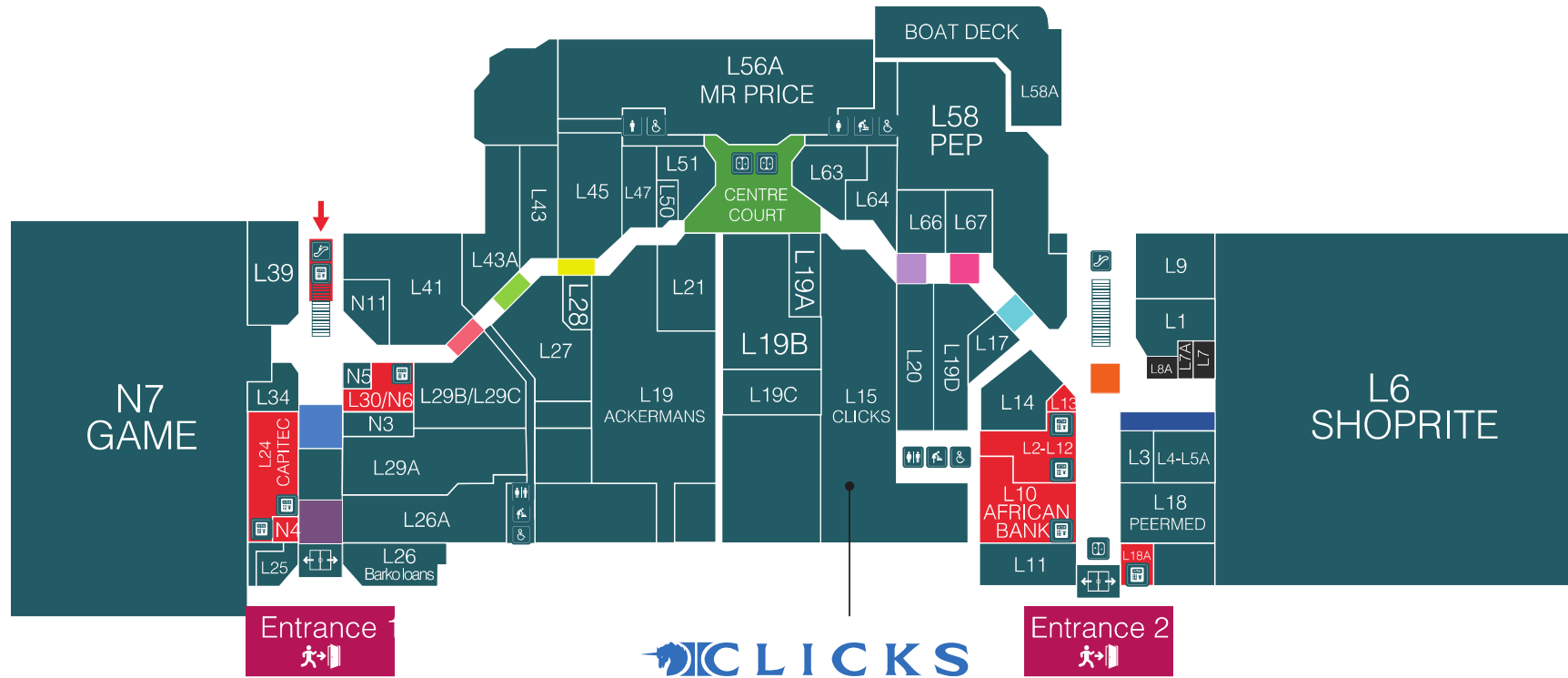
## UPPER LEVEL



# 03 FLOOR PLANS



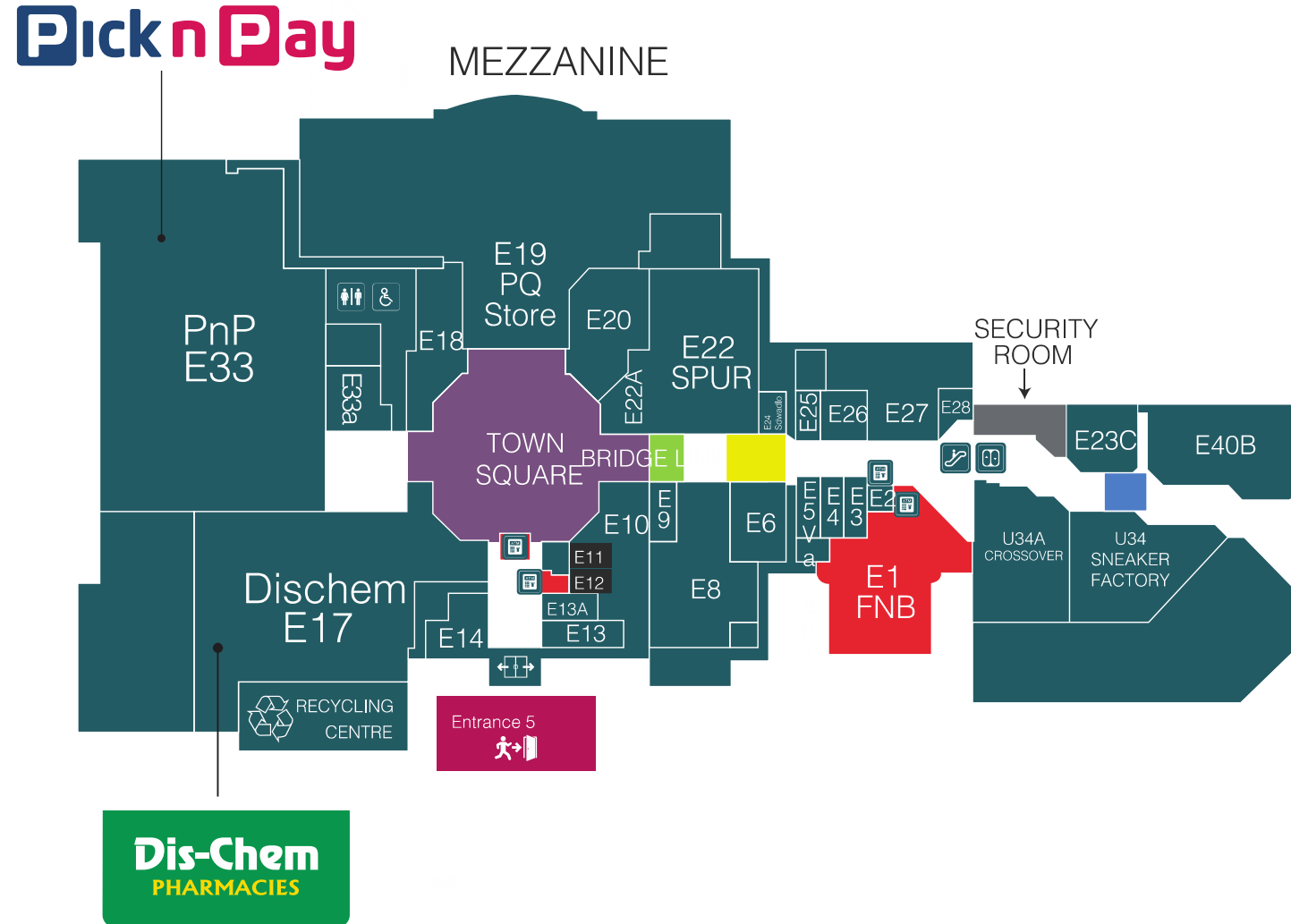
## LOWER LEVEL



### 03 FLOOR PLANS



#### ENTERTAINMENT LEVEL



04

# STORE LISTING



## 04 STORE LISTING



### Banks & Services

Absa - Atm 1  
Absa - Atm 2  
Absa Branch  
African Bank  
Barko Finance  
Capitec - Branch 1  
Capitec - Branch 2  
Fnb - Atm 1  
Fnb - Atm 2  
Fnb - Branch  
Nedbank - Atm  
Nedbank - Branch  
Old Mutual  
Standard Bank - Atm  
Standard Bank - Branch

### Department Stores

Shoprite  
Edgars  
Game  
PEP  
Pick 'n Pay  
The Family Lifestyle Centre  
Woolworths

### Fashion & Accessories

Abrams  
Ackermans  
Ackermans Woman  
Chanson  
Choice Clothing  
Clothing Junction  
Crossover International  
Daniel J  
Dunns  
Eartchild & Naartjie

Exact  
Foschini  
Gasoline Denim  
Identity  
Jam Clothing  
Code  
Fabiani  
Fashion Fusion  
Fuel  
Refinery  
Jet  
Legit  
Markham  
Milady's  
Mr Price  
Power Fashion  
PQ Clothing  
Queenspark  
Relay Jeans  
Skipper Bar  
Soviet  
Studio 88  
Tip Top Tailors

The Fix  
The Hub  
Truworths  
Uzzi  
Webbers  
X-kids  
Pick n Pay Clothing

### Health & Beauty

Arthur Ford  
Clicks  
Dis-Chem Pharmacy  
Eden Perfume  
Signature Cosmetics  
Peermed

### Jewellery

American Swiss  
Lakeside Fine Jewellery  
Lovisa  
Sterns

### Cellular & Electronics

Cell C  
Gadget  
Gallery  
Fix Hub  
Mtn  
Pep Cell  
Telkom Mobile  
Vodacom

### Interior & Home

Bradlows  
Fair Price Furniture  
PEP Home  
Sleepmasters  
Sheet Street  
UFO

### Restaurants and Fast Foods

Big Dog Pub & Grill  
Big Joe's Pies LL  
Chicken Licken  
Debonairs  
Big Joes Pies EL  
Bodis  
Hungry Lion  
Nkhuku Black  
Panarottis  
Pie City  
Santa Rio Spur  
The Fish & Chips Co.  
Wimpy

### Gifts & Specialty Stores

Cash Crusaders  
Homemark  
Pick n Pay Liquor  
Verimark  
Cuba Tobacconists

### Sports & Outdoor

Iconic MVMT  
Sportscene  
Total Sports  
Mr Price Sport

### Services

3@1  
Legal Wise  
Telkom Direct  
Postnet

### Books/Stationery & Toys

Lifestyle Books

### Motor & Motorbikes

Cassey's Auto

### Optometric & Eyewear

Lakeside Optometrists  
Spec-Savers  
Torga Optical

### Footwear

Rage  
Rage  
Side Step  
Solo Shoes  
Spitz  
Tekkie Town  
Family Shoe Centre  
Sneaker Factory

05



# EXHIBITION, ADVERTISING & MARKETING OPPORTUNITIES





### EXHIBITION / KIOSK OPPORTUNITIES

View the list of exhibition and kiosk space options at Lakeside Mall and secure short-term space to get your brand or products in front of our high traffic areas within the mall.



### ADVERTISING OPPORTUNITIES

Get your product or brand in front of millions of shoppers while they're in shopping mode with media and promotional opportunities.



### MALL MARKETING

Find out about shopper-focused marketing and promotional activities designed to drive footfall and maximise retail performance.



LAKESIDE MALL

# LEASING ENQUIRIES

OWNED &  
MANAGED BY

**GROWTHPOINT**  
PROPERTIES



**Amy Yelliah**

CENTRE MANAGER

011 427 1801 | 084 335 7347

[ayelliah@growthpoint.co.za](mailto:ayelliah@growthpoint.co.za)



**Tanielle Saunders**

PROPERTY ADMINISTRATOR

011 427 1801 | 087 350 6616

[tsaunders@growthpoint.co.za](mailto:tsaunders@growthpoint.co.za)

Amina Cachalia Street, Benoni, 1501, Gauteng

[www.facebook.com/thelakesidemall](https://www.facebook.com/thelakesidemall)

[www.lakesidemall.co.za](http://www.lakesidemall.co.za)